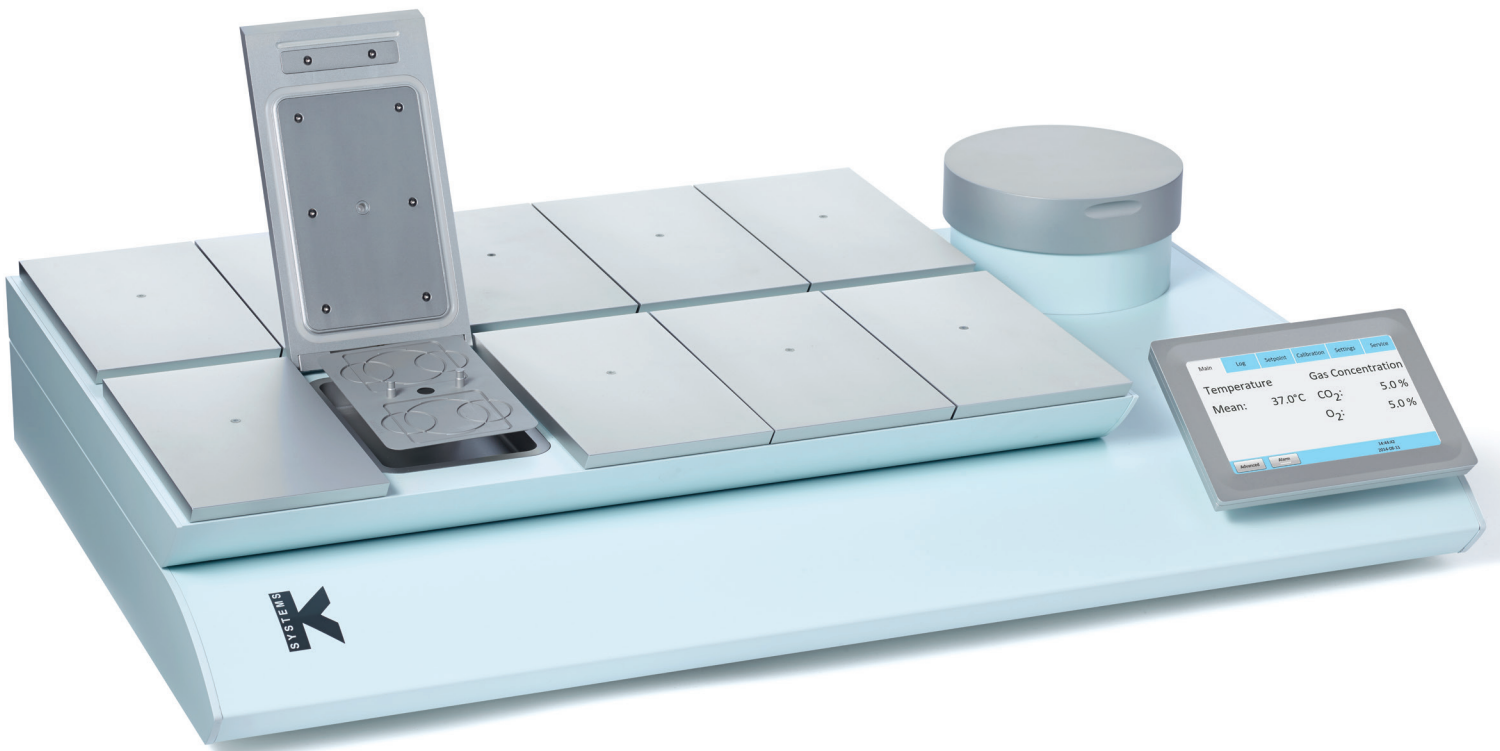




EQUIPMENT BY K-SYSTEMS®

# G210 InviCell

Ambient-Air technology for stress-free embryo culture



a CooperSurgical Fertility Company

## Features included as standard:

- State-of-the-art gas and temperature control
  - HEPA and VOC filtered gas supply
- Built-in gas mixer – recirculated gas means low running costs
- 6-sided heating system using Alu Heat technology
- Emulator for basal body temperature (BBT)
- EM Neutra technology eliminating electric field around embryos
- Extensive data logging and monitoring capabilities
- Innovative Danish design with advanced touch-based user interface
- Low noise levels

Data	G210 InviCell
Width (mm)	860
Depth (mm)	550
Height (mm, standard stand)	170
Weight (kg)	45
Power (kW)	0.27
Gas consumption (l/h):	
CO <sub>2</sub>	0.7
N <sub>2</sub>	7
Recovery time (min):	
CO <sub>2</sub>	< 2
O <sub>2</sub>	< 4
Individual chambers	10
Equilibrium chamber	1
Temperature controlled	Standard
Gas controlled	Standard
Alu Heat technology	Standard
No. of heating zones	11
No. of temperature sensors	11
Dish inserts (min 10 per unit):	
NUNC	Optional
Falcon	Optional
Vitrolife	Optional
Continuous pH measurements	
External CO <sub>2</sub> measurements	
External temperature measurements	
SMS-enabled alerts	Standard
120–240V	X
Packing included	Standard

## Options:

- Independent external monitoring of temperature and CO<sub>2</sub>
- Stacking system for up to 30 patients on same footprint



Stacking System	
Width (mm)	1100
Depth (mm)	830
Height (mm, standard stand)	1620
Weight (kg)	100

- Space for 3 incubators
- Space for PC
- Built-in power outlets
- Sliding shelves with soft-close feature
- Integrated ventilation system
- Drag chain to manage tubing and cables

Learn more about our equipment at [www.origio.com](http://www.origio.com)

Tel: 1-800-648-1151  
[www.origio.com](http://www.origio.com)



CooperSurgical Fertility Companies